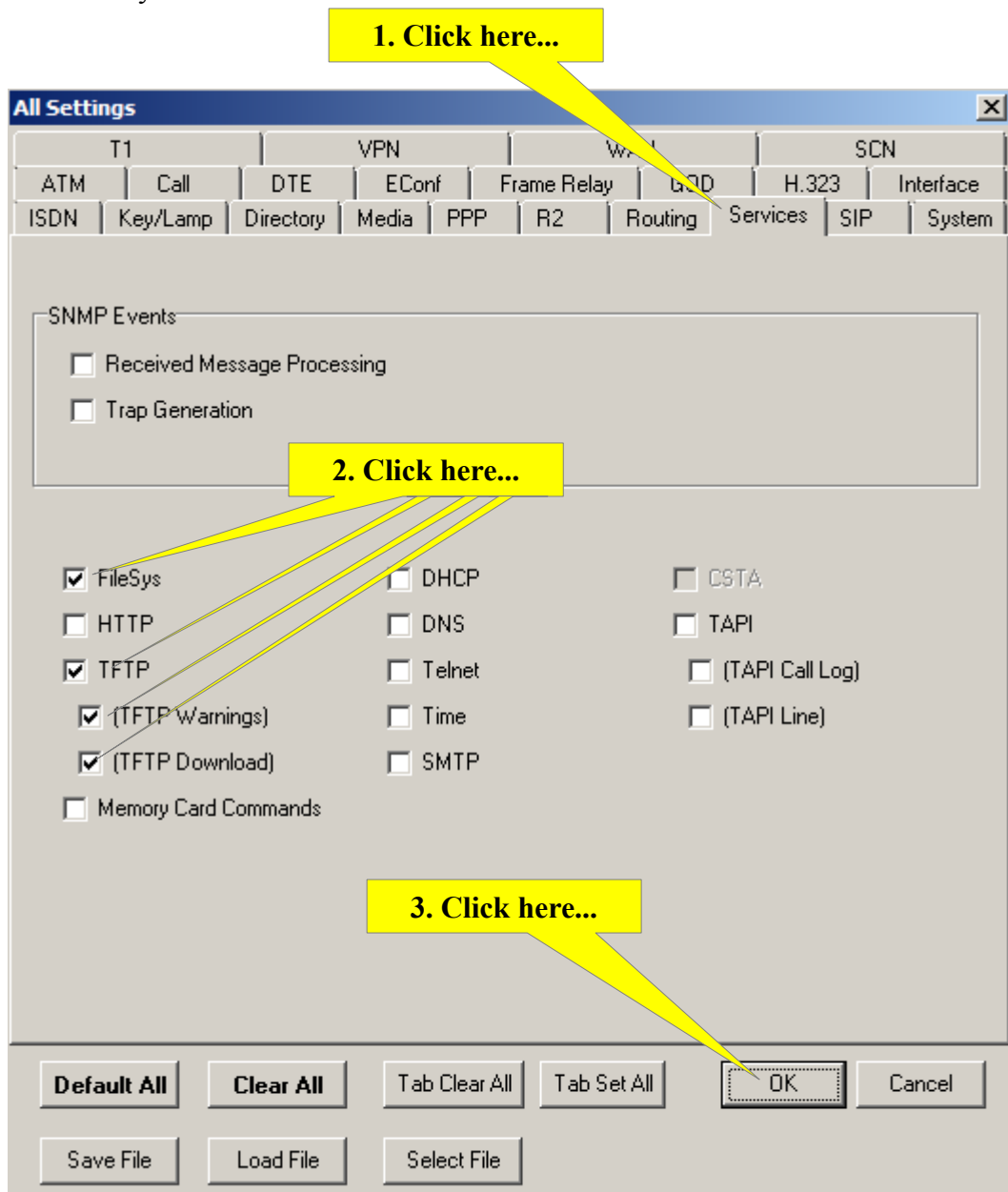


Avaya IP Office Monitoring TFTP Files Loading Telquest Tech Support

Run the Monitor Program.

It is located in the Avaya IP Office folder.



2 examples. The first fails to send the second is successful.

Avaya IP Office R7 SysMonitor - [STOPPED] Monitoring 192.168.111.107 ; Log Settings - C:\Users\...\sysmonitorsettings.ini

File Edit View Filters Status Help

***** SysMonitor v9.0 (32) [connected to 192.168.111.107] *****

1952941mS FILESYS: (0) FilesysReader(Read): A:\system\primary\9500R39.bin(AutoGenerate: Enabled) (Total = 1)

1952941mS FILESYS: (0) FilesysReader: SetState(FS_BEGIN): A:\system\primary\9500R39.bin

1952943mS FILESYS: (0) FilesysReader: SetState(FS_OPEN): A:\system\primary\9500R39.bin

1953014mS FILESYS: (0) FilesysReader: Cannot open file3: A:\system\primary\9500R39.bin

1953015mS FILESYS: (0) FilesysReader: SetState(FS_COMPLETE): A:\system\primary\9500R39.bin

1953015mS FILESYS: (0) ~FilesysReader: A:\system\primary\9500R39.bin Duration: 74ms (Total = 0)

1963015mS FILESYS: (1) FilesysReader(Read): A:\system\primary\9500R39.bin(AutoGenerate: Enabled) (Total = 1)

1963015mS FILESYS: (1) FilesysReader: SetState(FS_BEGIN): A:\system\primary\9500R39.bin

1963016mS FILESYS: (1) FilesysReader: SetState(FS_OPEN): A:\system\primary\9500R39.bin

1963089mS FILESYS: (1) FilesysReader: Cannot open file3: A:\system\primary\9500R39.bin

1963089mS FILESYS: (1) FilesysReader: SetState(FS_COMPLETE): A:\system\primary\9500R39.bin

1963090mS FILESYS: (1) ~FilesysReader: A:\system\primary\9500R39.bin Duration: 75ms (Total = 0)

1973089mS FILESYS: (2) FilesysReader(Read): A:\system\primary\9500R39.bin(AutoGenerate: Enabled) (Total = 1)

1973089mS FILESYS: (2) FilesysReader: SetState(FS_BEGIN): A:\system\primary\9500R39.bin

1973091mS FILESYS: (2) FilesysReader: SetState(FS_OPEN): A:\system\primary\9500R39.bin

1973170mS FILESYS: (2) FilesysReader: Cannot open file3: A:\system\primary\9500R39.bin

1973170mS FILESYS: (2) FilesysReader: SetState(FS_COMPLETE): A:\system\primary\9500R39.bin

1973171mS FILESYS: (2) ~FilesysReader: A:\system\primary\9500R39.bin Duration: 82ms (Total = 0)

***** SysMonitor v9.0 (32) [connected to 192.168.111.107] *****

***** Warning: Logging to Screen Stopped *****

***** Warning: Logging to Screen Started *****

2202590mS FILESYS: (31) FilesysReader(Read): A:\system\primary\9500R39.bin(AutoGenerate: Enabled) (Total = 1)

2202590mS FILESYS: (31) FilesysReader: SetState(FS_BEGIN): A:\system\primary\9500R39.bin

2202592mS FILESYS: (31) FilesysReader: SetState(FS_OPEN): A:\system\primary\9500R39.bin

2202668mS FILESYS: (31) FilesysReader: SetState(FS_SENDING): A:\system\primary\9500R39.bin

2202668mS FILESYS: (31) FilesysReader: Send File: A:\system\primary\9500R39.bin

2202716mS FILESYS: (31) FilesysReader: SendConnectIndication: A:\system\primary\9500R39.bin Size(180893) Attributes(32)

2202756mS FILESYS: (31) FilesysReader: Percent(10): A:\system\primary\9500R39.bin

2202801mS FILESYS: (31) FilesysReader: Percent(20): A:\system\primary\9500R39.bin

2202847mS FILESYS: (31) FilesysReader: Percent(30): A:\system\primary\9500R39.bin

2202887mS FILESYS: (31) FilesysReader: Percent(40): A:\system\primary\9500R39.bin

2202932mS FILESYS: (31) FilesysReader: Percent(50): A:\system\primary\9500R39.bin

2202976mS FILESYS: (31) FilesysReader: Percent(60): A:\system\primary\9500R39.bin

2203022mS FILESYS: (31) FilesysReader: Percent(70): A:\system\primary\9500R39.bin

2203060mS FILESYS: (31) FilesysReader: Percent(80): A:\system\primary\9500R39.bin

2203105mS FILESYS: (31) FilesysReader: Percent(90): A:\system\primary\9500R39.bin

2203179mS FILESYS: (31) FilesysReader: Percent(100): A:\system\primary\9500R39.bin

2203179mS FILESYS: (31) FilesysReader: SetState(FS_COMPLETE): A:\system\primary\9500R39.bin

2203180mS FILESYS: (31) ~FilesysReader: A:\system\primary\9500R39.bin Duration: 590ms (Total = 0)

Configure the Monitor as shown on Page 1.

Then when it is running, plug in the phone to be tested.

Watch the screen of the Monitor.

Look for the “Starts here...” area, it tells you what file the phone is looking for. If it does not find it, then you need to add it to the KSU's Embedded Files area.

